



Corporate Parenting Report

July 2015

**Children Looked After
Children Subject to a Child Protection Plan**

(Activity to end of March 2015)

CONTENTS

PART A:	PERFORMANCE INFORMATION	3
A1)	<u>KEY PERFORMANCE INDICATORS</u>	3
Part B:		
B1)	<u>NUMBERS OF CLA & CPP</u>	6
PART C:	CHILDREN LOOKED AFTER (CLA)	7
C1)	<u>AGE GROUPS</u>	7
C2)	<u>GENDER</u>	8
C3)	<u>ETHNICITY</u>	9
C4)	<u>PLACEMENT TYPE</u>	10
C5)	<u>CLA EDUCATION & HEALTH</u>	11
PART D:	CHILDREN SUBJECT TO A CHILD PROTECTION PLAN (CPP)	12
D1)	<u>AGE GROUPS</u>	12
D2)	<u>GENDER</u>	13
D3)	<u>ETHNICITY</u>	14
D4)	<u>CATEGORY OF ABUSE</u>	15
D5)	<u>DURATION OF PLAN</u>	16

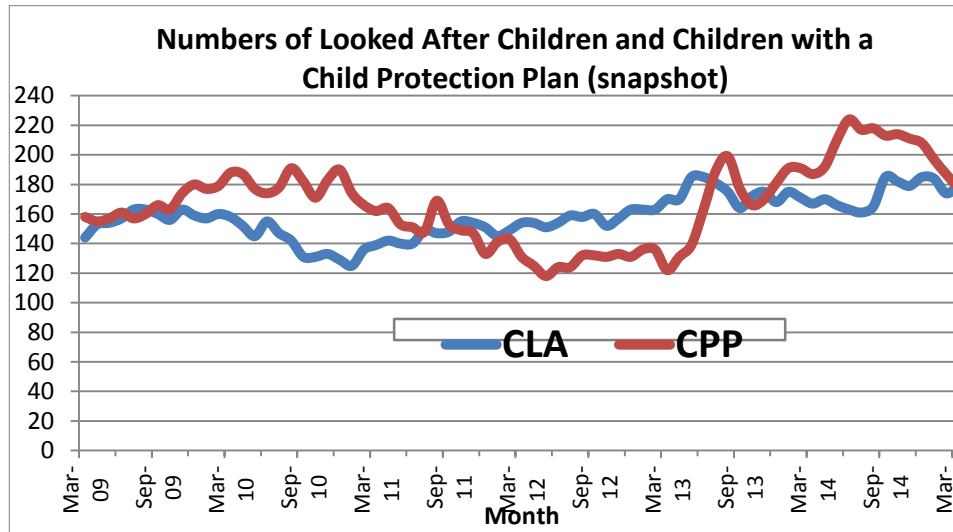
Part A – Key Performance Indicators

Key Indicator Summary 2014/15 - Provisional Data											
Quarterly Performance for Children's Services Social Care											
Performance rag rated against target											
PI Ref	PI Description	England average 13/14	Statistical Neighbours Average 13/14	Harrow 11/12	Harrow 12/13	Harrow 13/14	Q1 14/15 YTD	Q2 14/15 YTD	Q3 14/15 YTD	Q4 14/15 YTD	Comments
1	% of referrals leading to the provision of a social care service (YTD)	85.9	96.2	78.5	91.8	96.3	85.90	89.00	88.5	88.8	
2	Rate of Assessments per 10,000 child population. Measured Quarterly.	Not published as LA's moved to single assessments at different points in the year				433.3	364.0	353.8	347.7	345.7	Rate: per 10,000 child population (Rate is grossed for Q1, Q2 & Q3 to give year end forecast, Q4 rate will be actual rate for the year)
3	Timeliness of Assessments (% complete in 45 working days) - YTD Target - 90%	82.2	81.8	New indicator from 2013 - 14		94.9	85.9	88.2	88.7	88.1	
4	Rate of S47 enquiries per 10,000 child population. Measured Quarterly.	124.1	123.1	54.4	83.3	113.8	120.4	104.3	96.6	92.1	Rate: per 10,000 child population (Rate is grossed for Q1, Q2 & Q3 to give year end forecast, Q4 rate will be actual rate for the year)
5	Children becoming the subject of a CPP (rate per 10,000 of the CYP population) Measured Quarterly..	Not published		25.7	26.3	44.0	53.6	56.3	39.0	36.9	Rate: per 10,000 child population (Rate is grossed for Q1, Q2 & Q3 to give year end forecast, Q4 rate will be actual rate for the year)
6	Rate of ICPCs per 10,000 of the CYP population. Measured Quarterly.	56.8	52.8	30.1	40.4	52.1	56.4	48.0	49.1	45.7	Rate: per 10,000 child population (Rate is grossed for Q1, Q2 & Q3 to give year end forecast, Q4 rate will be actual rate for the year)
7	% of children conferenced within 15 working days of strategy discussion (YTD) Target - 90%	69.3	72.2	85.5	79.2	71.5	86.4	83.5	86.3	84.4	
8	Rate of CPP per 10,000 population. (snapshot)	42.1	37.5	23.6	23.6	32.8	40.4	38.6	37.5	31.9	Snapshot rate per 10,000 child population (as at last day of the reporting period)
9	CPP for 2nd or subsequent time (within 2 yrs of last plan) (%)	Not published		6.4	8.3	3.0	9.6	8.5	10.9	7.5	

PI Ref	PI Description	England average 13/14	Statistical Neighbours Average 13/14	Harrow 11/12	Harrow 12/13	Harrow 13/14	Q1 14/15 YTD	Q2 14/15 YTD	Q3 14/15 YTD	Q4 14/15 YTD	Comments
10	% of children with CPP for 2 years or more (snapshot) Target - 6%	2.6	4.3	New indicator from 2013 - 14		1.0	0.9	0.5	0.0	0.0	
11	Ceased CPP that lasted 2 or more years (% YTD) Target - 7%	4.5	5.5	17.9	11.2	5.4	2.0	5.2	3.6	2.9	
12	Rate of CLA per 10,000 population. Measured Quarterly. (snapshot)	60	43	28.3	30.0	30.0	29.4	33.6	33.4	30.9	Snapshot rate per 10,000 child population (as at last day of the reporting period)
13	% of New CLA who were previously adopted, had a Special Guardianship Order (SGO) or residence order granted	Not published		New indicator from 2013 - 14		0.7	0.00	0.00	0.00	0.00	
14	CLA placement stability: number of moves (% with 2+ moves) Target - 11%	11.0	12.6	17.0	15.5	10.0	1.8	4.8	8.6	11.5	
15	CLA placement stability: length of placement (%) Target - 71%	67.0	64.0	71.4	52.8	45.0	43.5	40.0	40.0	34.5	
16	% of CLA placed more than 20 miles away from home (snapshot)	13.0	20.3	19.0	19.0	16.0	16.4	16.7	12.9	21.8	
17	% of Care Leavers in suitable accommodation (combined for 19, 20 and 21 year olds)	77.8	79.7	77.3	80.0	95.4	23.8	68.3	73.4	85.2	
18	% of Care Leavers not in education, employment or training (combined for 19, 20 and 21 year olds)	38.0	32.0	36.0	33.0	29.0	14.3	21.7	25.3	29.5	

23	Educational attainment of school aged Children (CiN & CPP, CLA)	Harrow 2012-13	England average	SN Average	Harrow 2013-14
	Percentage of children in Need (CiN + CPP) achieving at least level 4 at KS2 Maths (Source DfE)	48.8	58	63.3	57
	Percentage of children in Need (CiN + CPP) achieving at least level 4 at KS2 in Grammar, Punctuation & Spelling (Source DfE) new 2013	41.5	46	51.7	50
	Percentage of children in Need (CiN + CPP) achieving at least level 4 at KS2 in Reading, writing and maths	34.1	46	52.3	47
	Percentage of children in Need (CiN + CPP) who achieve 5+ A* -C grades at GCSE including English and mathematics. (Source DfE)	22.4	15.1	24.1	12.8
	Percentage of children looked After achieving at least level 4 at KS2 in Maths (Source DfE)	67.0	61	75	100
	Percentage of children looked After achieving at least level 4 at KS2 in Grammar, Punctuation & Spelling (Source DfE)	66.7%	49	58	0
	Percentage of children looked After achieving at least level 4 at KS2 in Reading (Source DfE)	66.7%	68	67	100
	Percentage of children looked After achieving at least level 4 at KS2 in Reading, writing and maths (Source DfE)	66.7%	48	58	0
	Percentage of children Looked After who achieve 5+ A* -C grades at GCSE including English and mathematics. (Source DfE)	8.3%	12	31.4	0
24	Attendance at school of school aged Children in Need (CIN & CPP, CLA) (2013-14)				
	Percentage of sessions missed. (CiN & CPP)	11.6	9.4	9.5	8.7
	Percentage classed as persistent absentees (CiN & CPP)	17.2	13.8	13.35	12.5
	Percentage classed as persistent absentees CPP -only	18.9	15.2	15.4	13.5
	Percentage of sessions missed. (CLA 1 year+)	7.8	4.7	4.9	4.3
	Percentage classed as persistent absentees (CLA 1 year+)	supressed - low nos	6.1	7.3	supressed - low nos
25	Exclusion from school of school-aged Children in Need (CIN & CPP) & CLA (2011-12)				
	Percentage of children permanently excluded. (CiN & CPP)	supressed - low nos	0.5	0.38	not published
	Percentage of children with at least one fixed exclusion. (CiN & CPP)	6.2	7.8	6.98	
	Percentage of children with at least one fixed exclusion. (CLA 1 year+)	supressed - low nos	11.36	13.16	

Part B –Numbers of CLA and CPP over time

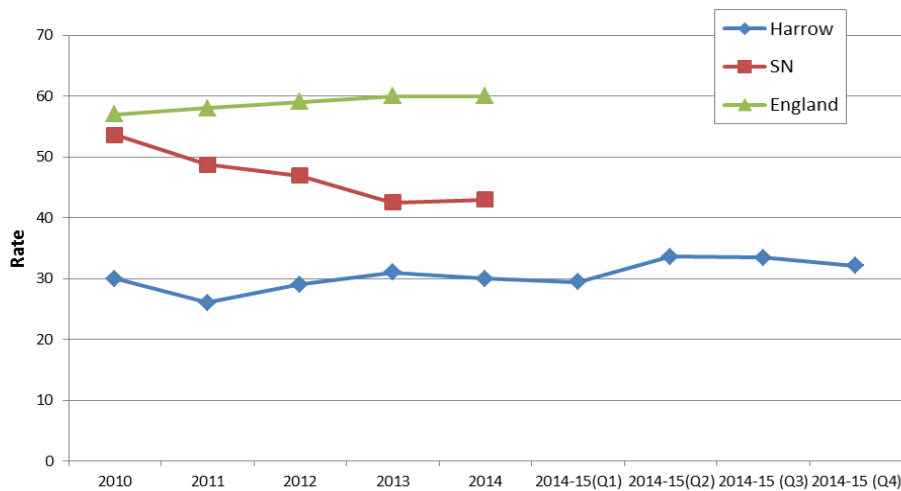


CPP numbers rose significantly in 2013-14. The rise corresponds with a lowering of thresholds. The numbers have been dropping and at 31st March the rate per 10,000 children dropped to 31.9 compared to 32.8 at the same time last year.

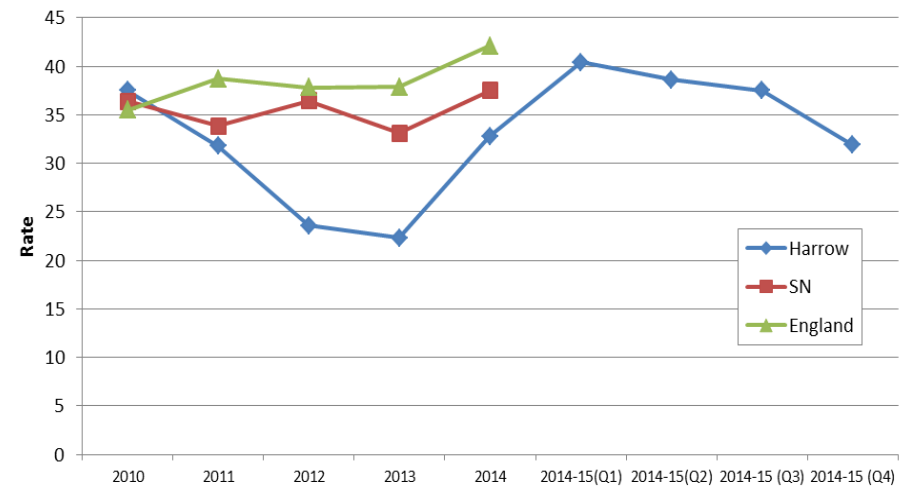
We have similar numbers of children with child protection plans and those looked after

CLA numbers have risen during the year and at 31st March the rate per 10,000 children was 30.9 compared to 30 at the same time last year. Harrow continues to have a significantly lower rate of CLA than comparators (almost 10 per 10,000 lower). Further analysis of the statistical neighbours group shows that Merton, Kingston, Redbridge and Sutton have similar rates. The average is pulled up by Brent, Hillingdon, Hounslow and Ealing which have high numbers of CLA (300+).

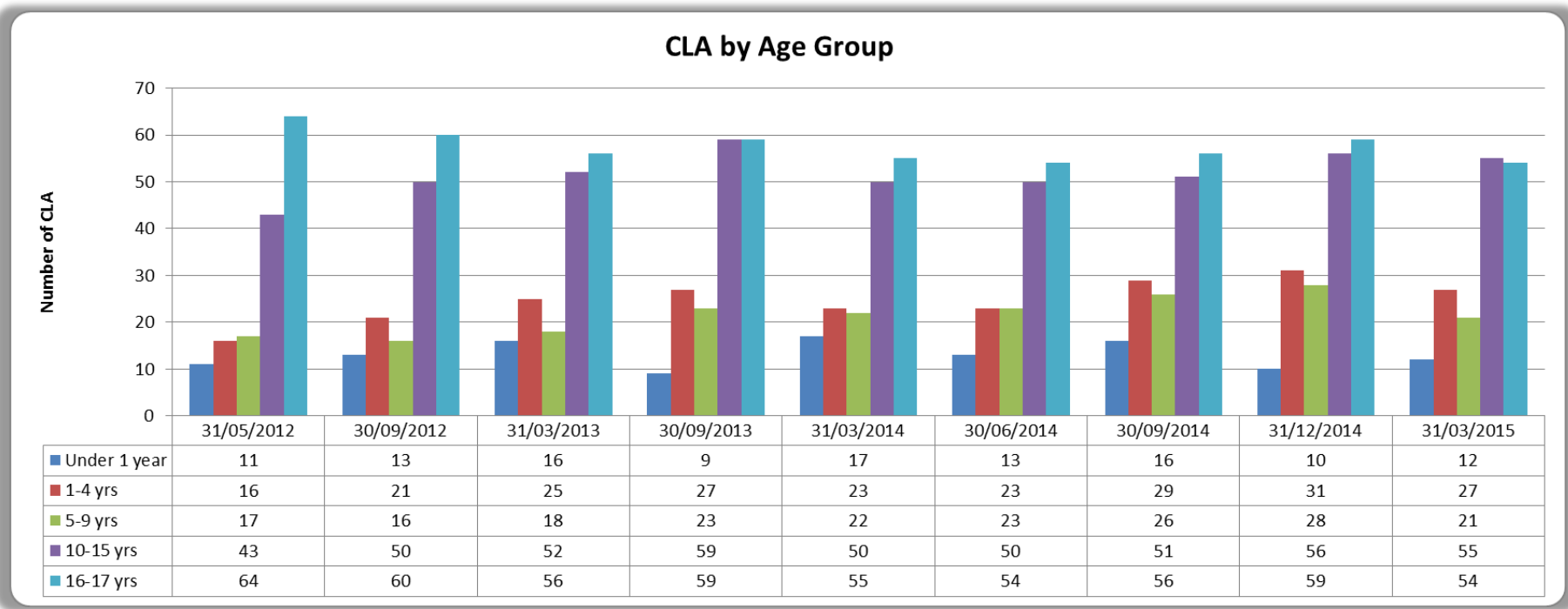
Rate of CLA per 10,000 children aged under 18



Rate of CPP per 10,000 children aged under 18



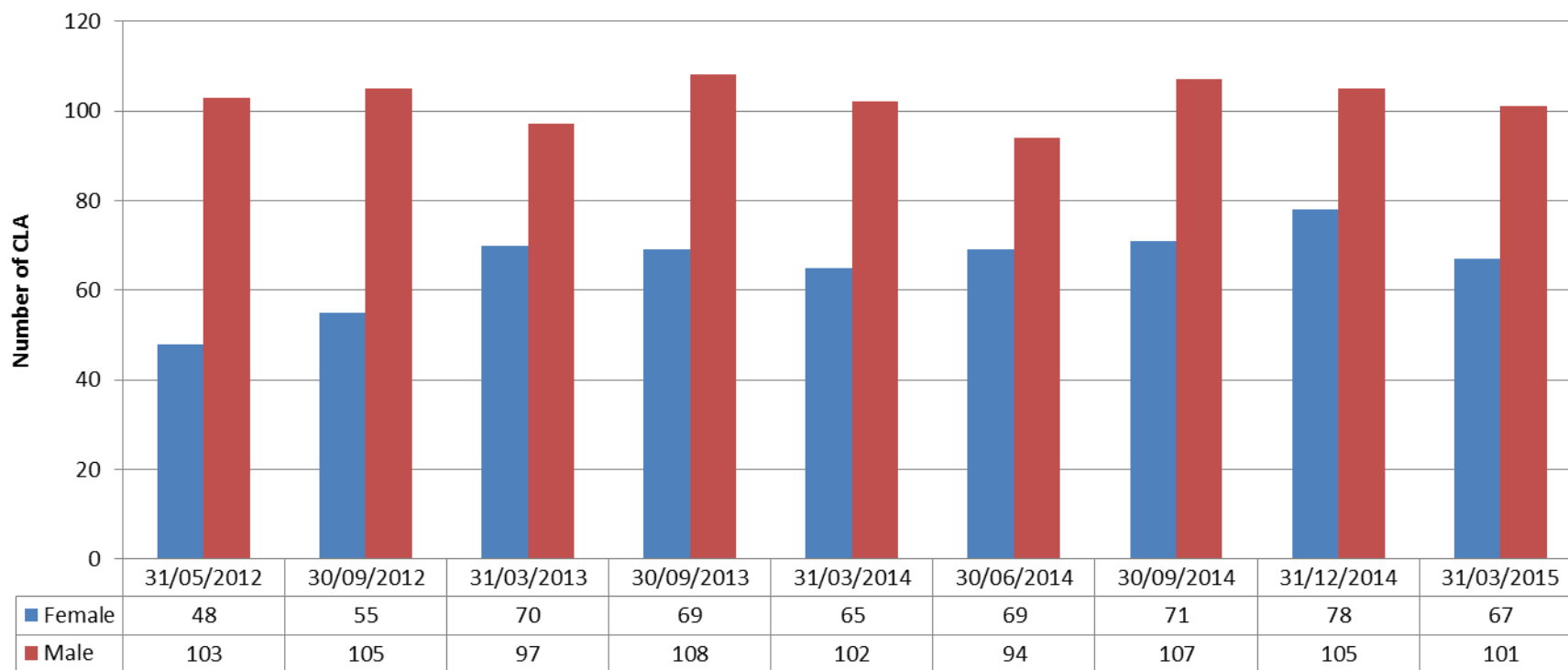
C1 – Children looked after age group. (Comparator info. source SSSA 903 March 2014)



The number and proportion of CLA aged up to 4 is higher than statistical neighbours and England averages and lower for age groups between 5 and 15, Compared to 2013-14 data there are small but not significant changes in different age groups

% age of CLA at 31/3/2014	Age at 31 March 2014 (years) (%)				
	Under 1	1 to 4	5 to 9	10 to 15	16 -17
England	5.6	16.6	20.2	36.5	21.0
London	4.7	12.1	15.9	37.2	30.1
Stat. neighbours avg.	4.5	12.8	15.5	35.8	31.4
Harrow	9.1	15.2	12.1	30.3	33.3
Harrow Q4 2014-15	7.1	16	12.4	32.5	32

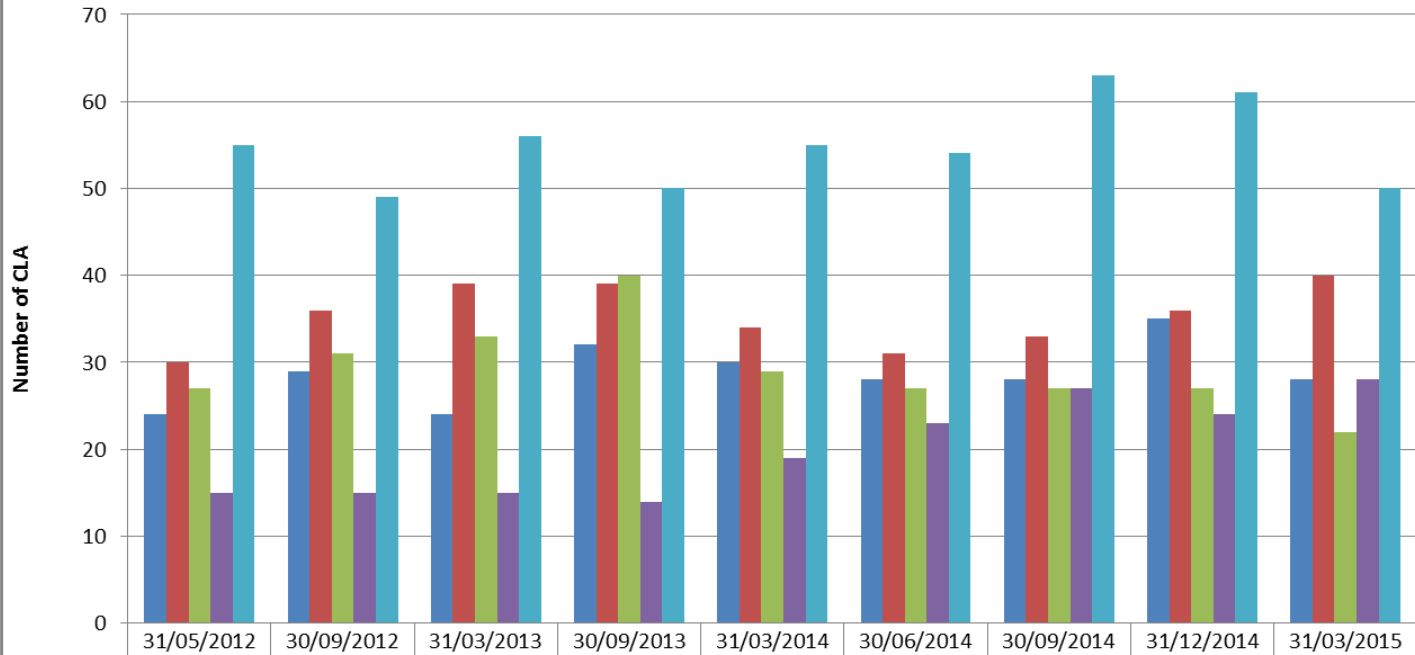
CLA by Gender



In line with comparators, London and England, Harrow historically has a higher proportion of males who are looked after, although this has dropped slightly since March 2014.

% gender of CLA 31/3/2014	Gender (%)	
	Male	Female
<i>England</i>	55.3	44.7
<i>London</i>	56.5	43.5
<i>Stat. neighbours avg.</i>	56.3	43.7
<i>Harrow</i>	60.6	39.4
Harrow Q4 2014-15	59.8	39.6

CLA by Ethnicity



	31/05/2012	30/09/2012	31/03/2013	30/09/2013	31/03/2014	30/06/2014	30/09/2014	31/12/2014	31/03/2015
Asian	24	29	24	32	30	28	28	35	28
Black	30	36	39	39	34	31	33	36	40
Mixed	27	31	33	40	29	27	27	27	22
Other	15	15	15	14	19	23	27	24	28
White	55	49	56	50	55	54	63	61	50

As would be expected of Harrow's diverse population, the representation of Black and Minority Ethnic groups is considerably higher than England and the statistical neighbour average.

Overall two thirds of Harrow's children looked after population are from BME groups

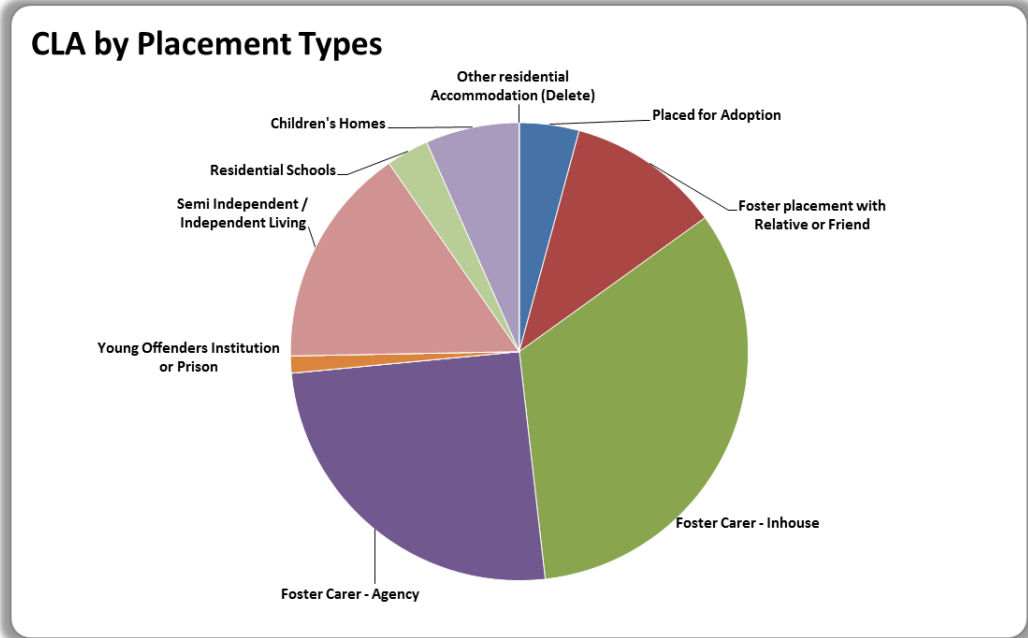
There have been some changes in the ethnic background of our CLA population since March 2014, the proportion of CLA in mixed groups, Asian and White groups has dropped. There is an increase in the proportion of looked after children from Black ethnicity and from other ethnic groups

% of ethnicity of CLA at 31/3/2014	White	Mixed	Asian or Asian British	Black or Black British	Other Ethnic Groups
<i>England</i>	77.6	8.9	3.7	6.7	3.1
<i>London</i>	41.4	16.7	8.3	27.7	5.8
<i>Stat. neighbours avg.</i>	44.7	16.8	13.3	19.8	4.7
<i>Harrow</i>	32.4	17.6	17.6	20.6	11.8
Harrow 2014-15 Q4	29.6	13	16.6	23.7	16.6

C4 – Children looked after placement type

Placement Type	Dec-14	March 15
Placed for Adoption	6	7
Foster placement with Relative or Friend	23	18
Foster Carer – In-house	70	55
Foster Carer - Agency	36	42
Secure Unit	0	0
Young Offenders Institution or Prison	1	2
Placed with Parents	0	0
Semi Independent / Independent Living	28	26
Residential Schools	7	5
Children's Homes	14	11
Other residential Accommodation	0	0
Grand Total	185	166

Harrow Placement Details at 31st March 2015



The types of placements our CLA are fairly stable with a slight drop in placements with family and friends and in independent living. The numbers of CLA have dropped at end of March and this is noticeable in the drop in in-house placements

In house placements can fluctuate as most of the emergency and short term placements are made with in-house carers.

All placement moves are scrutinised at a panel for authorisation before they are implemented. Support packages have been developed to prevent placement breakdown .

C5 – CLA Health & Education Data

note that DfE indicators include only CLA who have been looked after for more than one year to measure outcomes, **Education data is updated annually**

CLA educational attainment trends

CLA Looked after for over a year as at 31/03/14	2011	2012	2013	2014 Provisional
Total Children in KS2 cohort	2	2	3	1
Attained at least Level 4 in Maths at end of KS2	50%	0%	67%	100%
Attained at least Level 4 in Reading at end of KS2	0%	0%	67%	100%
Attained at least Level 4 in Writing at end of KS2	0%	0%	67%	0%
Attained at least Level 4 in Reading, Writing and Maths at end of KS2	0%	0%	67%	0%
Total young people in GCSE cohort	19	13	12	9
GCSE: Attained at least 1 A*-G	47.4%	46.2%	33.3%	66.7%
GCSE: Attained 5 or more A*-G	31.6%	23.1%	16.7%	33.3%
GCSE: Attained 5 or more A*-C	5.30%	0	8.30%	0
GCSE: Attained 5 or more A*-C INC Eng and Maths	5.30%	0	8.30%	0

	Dec-14	Mar 15
Number of statutory school age CLA (snapshot)	87	85
% of school age CLA (all CLA) permanently excluded this year (Sept to date)	0	0
% of school age CLA (all CLA) fixed-term excluded this year (Sept to date)	8	12.9
% absence from school (all CLA - (number of sessions missed))	11.5	11
% of CLA (all CLA) classified as persistent absentees	19.5	22.4
% of CLA (all school age CLA) with up to date PEP	60.9	68.2

Detail for 2013-14 GCSEs:

	TOTAL IN COHORT	Sat GCSE Exams?	GCSE ONLY				GCSE&Equivalent	
			1 A*-G	5 A*-G	5* A-C	5* A-C inc Eng Math	5* A-C	5* A-C inc Eng Math
All CLA	25	15	13	7	1	0	1	0
%	-		52.0%	28.0%	4.0%	0.0%	4.0%	0.0%
CLA (1 YR+)	9	6	6	3	0	0	0	0
%	-	66.7%	66.7%	33.3%	0.0%	0.0%	0.0%	0.0%

Health Data for CLA:

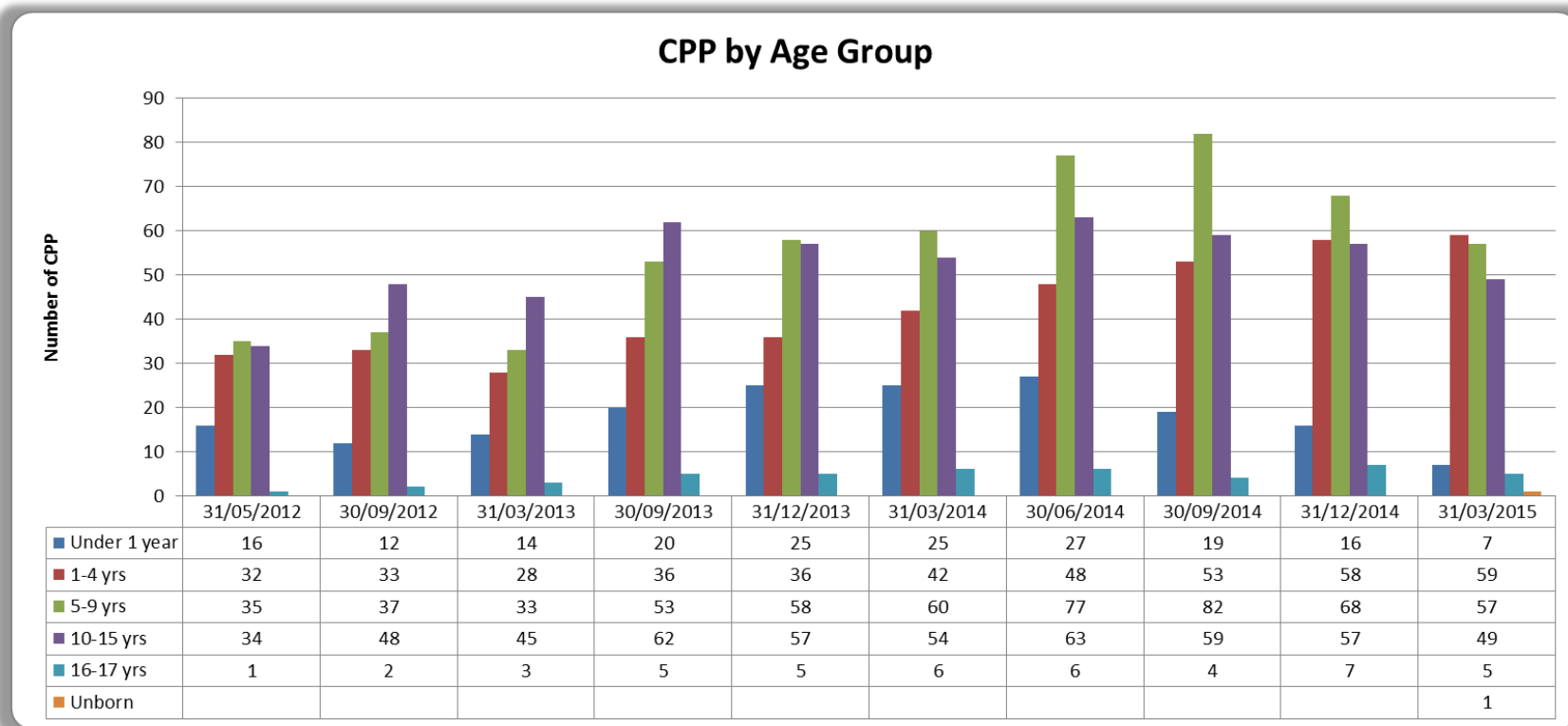
All children who have been looked after over a year are required to have annual health and dental checks but some refuse, only 11% of new CLA have had a health check in the target timescale of 28 days.

This academic year 11 school aged children have had at least 1 fixed term exclusion, while none have been permanently excluded. 19 CLA are classified as persistent absentees missing 15% or more of school days. Please note DfE measures children who have been looked after 1 year plus **and** are on roll only, Published figures denote small numbers and data is suppressed.

	Dec-14	MAR - 15
% of new CLA where health assessment has been completed within 28 working days (month on month)	16.7	11.76
% of CLA with up to date Dental Checks (CLA 1 yr +)	81.2	89.7
% of CLA with up to date Health Checks (CLA 1 yr +)	89.1	88.7

Part D – D1: Children subject to a Child Protection Plan (CPP) by age group

Children are made the subject of a child protection plan (CPP) when they are considered to be at risk of physical, sexual, emotional harm or neglect. Over the past three years, Harrow has seen a very large increase of in the number of children with a CPP, from 118 in May 2012 to 221 in June 2014 (an increase of 87%). However, over quarters two, three and four of this year, the number is decreasing, to 206 at the end of December and further to 178 at the end of March.



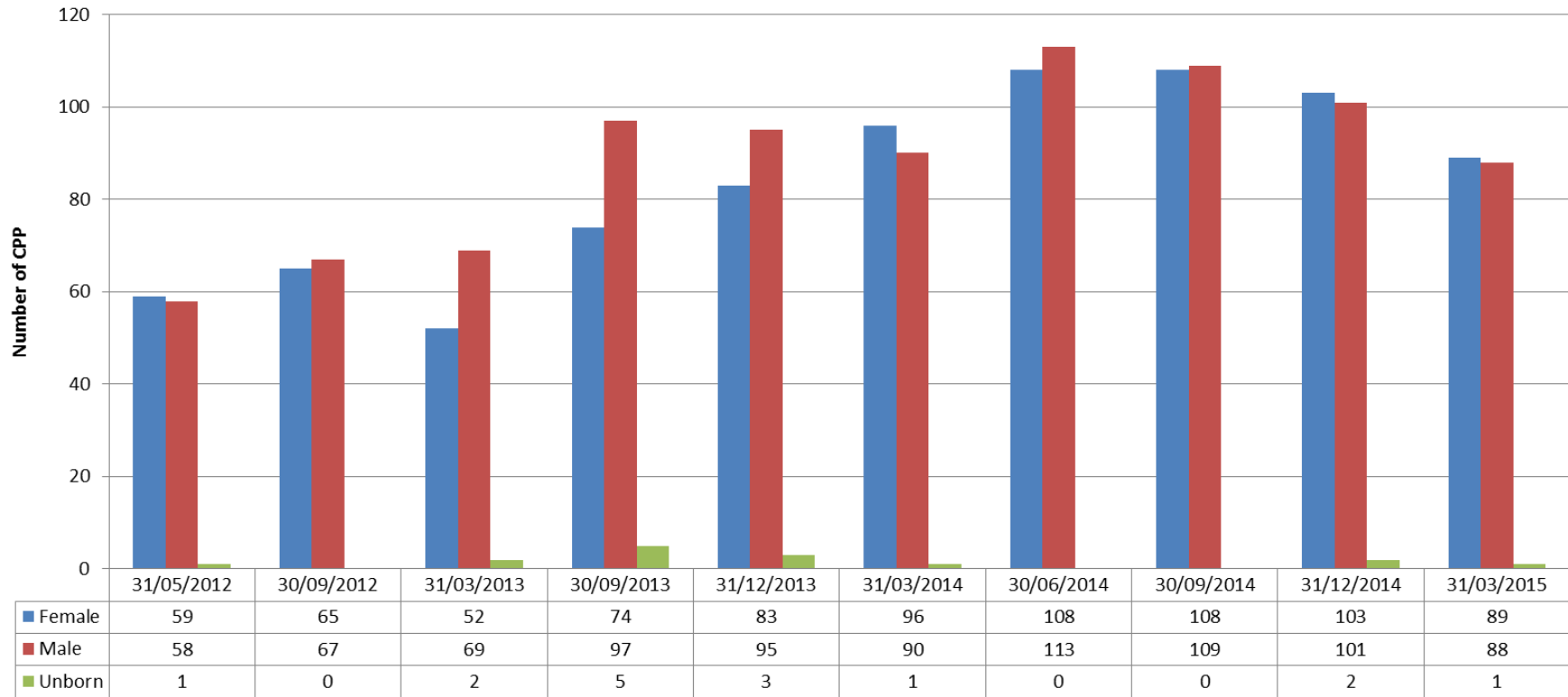
The proportion of children with a CPP aged 1-4 has increased during the year and the proportion aged 5 – 15 has decreased over the year.

Comparator info. for age group of children with CPP's at 31st March 2014 (%) Source: CiN Census (numbers under 5 suppressed)

	Unborn	Under 1	1-4 years	5-9 years	10-15 years	16 & over
England		10.8	29.2	29.7	25.3	2.8
London		10.8	26.8	29.6	28.1	3.0
Harrow		x	21.3	33.9	27.9	x
Harrow Dec 14	0.56	3.93	33.2	32	27.5	2.8

D2: Children subject to a Child Protection Plan (CPP) by gender

CPP by Gender

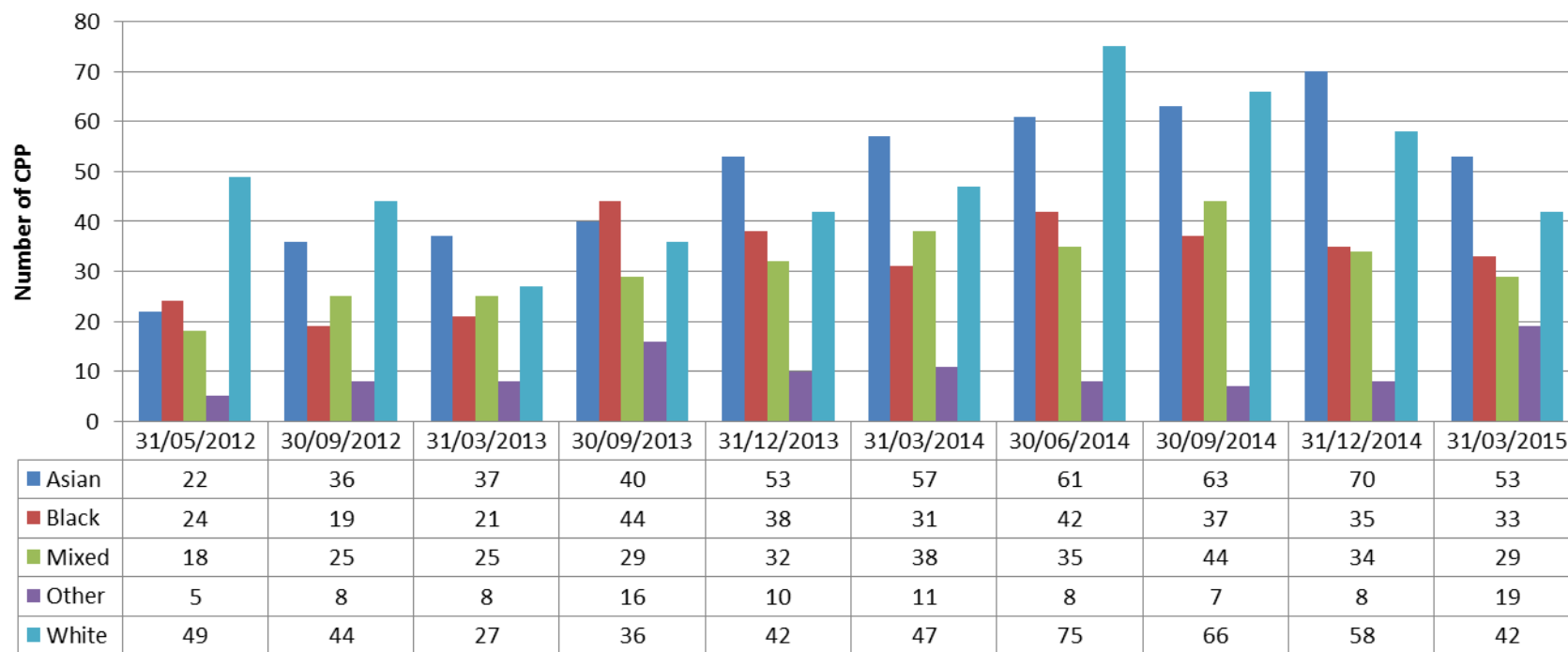


The proportions of males and females subject to a child protection plan has been balanced this year at around half and half, but there were significantly more males during 2013.

Comparator info. for gender of children with CPPs at 31st March 2014 (%) Source: CiN Census (numbers under 5 suppressed)

	Male	Female	Unborn / unknown
England	50.4	47.3	2.3
London	49.6	48.6	1.9
Harrow	48.1	51.9	0.0
Harrow March 15	49.4	50.0	0.6

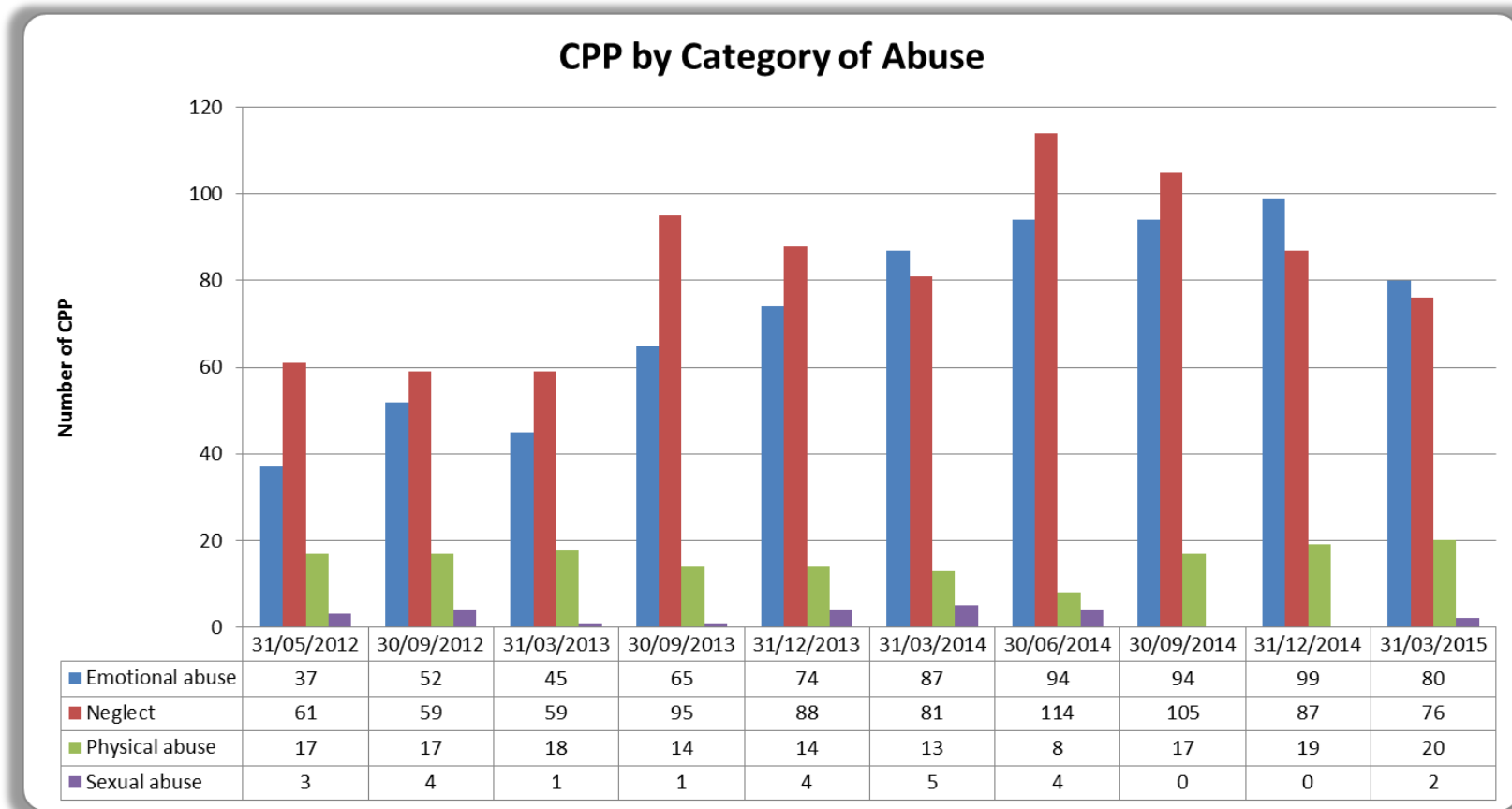
CPP by Ethnicity



The proportion of BME groups is considerably higher than England and London averages but this is as expected due to Harrow's diverse population; just over three quarters of children requiring a child protection plan in Harrow are from BME groups. There have been significant decreases over the past two years in the proportion from white communities and increases in proportions from Black and most significantly from 'Other' communities.

Comparator info. for ethnicity of children with CPPs at 31st March 2014 (%) Source: CiN Census (numbers under 5 suppressed)

	White	Mixed	Asian or Asian British	Black or Black British	Other Ethnic Groups	Refused or N/K
England	76.5	7.9	5.5	5.1	1.4	3.6
London	41.2	17.1	12.8	22.6	3.3	3.1
Harrow	26.8	19.7	30.6	15.8	x	x
Harrow Mar 15	23.9	16.5	30.1	18.8	10.8	0



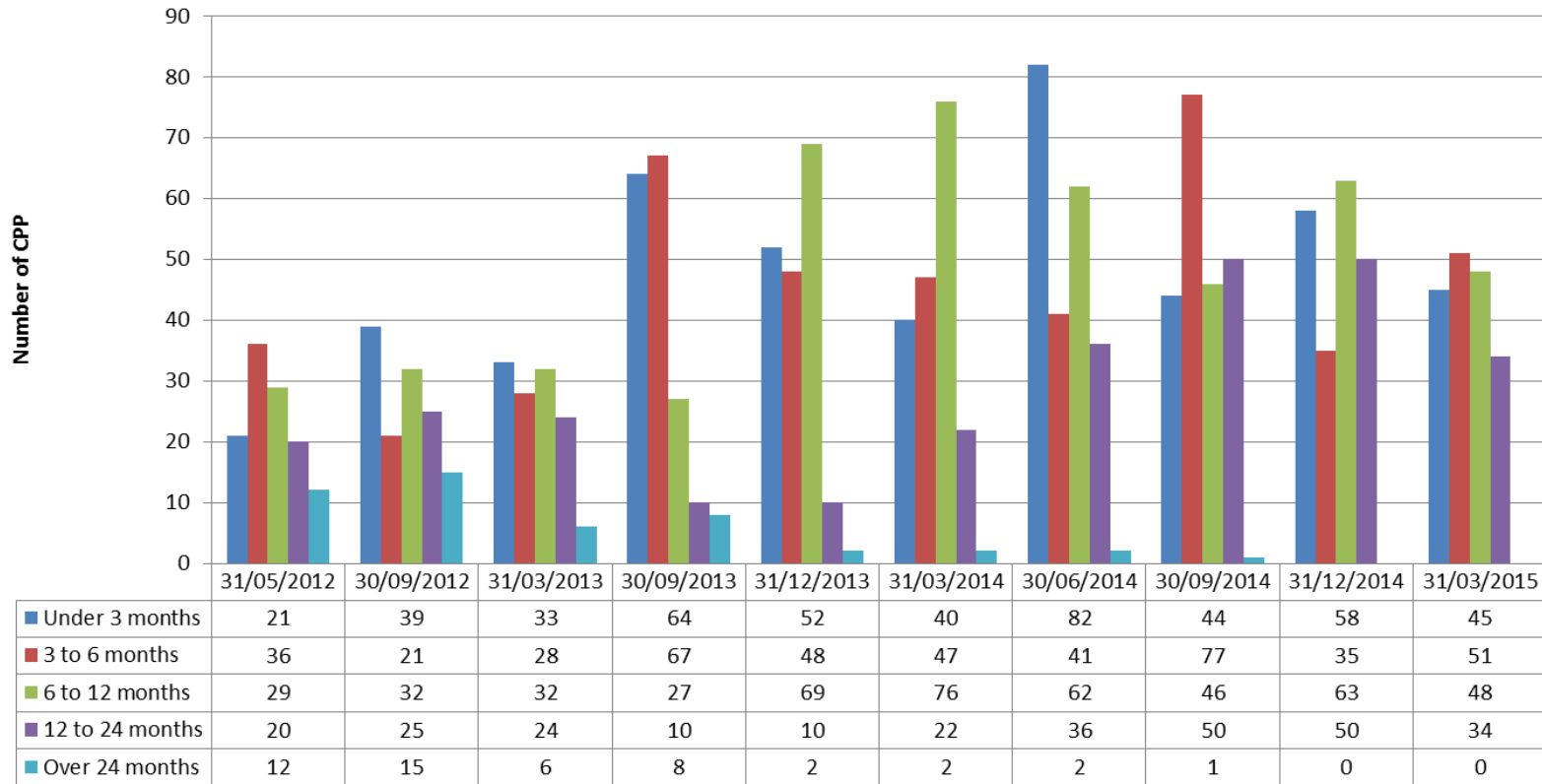
The proportion of children requiring a plan under the category of 'neglect' has dropped since last year, while the proportion under the physical abuse category has increased.

Comparator Info – CPP category at 31st March 2014

(%) Source: CiN Census (numbers under 5 suppressed)

	Neglect	Physical Abuse	Sexual Abuse	Emotional Abuse	Multiple
England	42.7	8.4	4.3	35.6	8.9
London	38.1	9.2	3.0	41.8	7.8
Harrow	48.6	7.4	x	44.0	x
Harrow Mar 15	42.7	11.2	1.1	44.9	0

CPP by Duration of Plan



Co-ordinated work has continued to progress and end plans in a timely manner, meaning that the numbers of plans lasting over 24 months have reduced gradually; at the end of March 2015 there were no children with a plan lasting 2 years or more. The number of children with plans over 12 months has increased compared to March 2014

Comparator Info – CPP duration at 31st March 2014 (%) Source: CiN Census (numbers under 5 suppressed)

	Under 3 months	3 - 6 months	6 - 12 months	1 - 2 years	2 years and over
England	31.6	25.3	26.5	14	2.6
London	30.9	24.6	25.8	15.1	2.6
Harrow	25.1	25.7	38.8	11.8	1.1
Harrow Mar 15	25.3	28.7	27	19.1	0.0